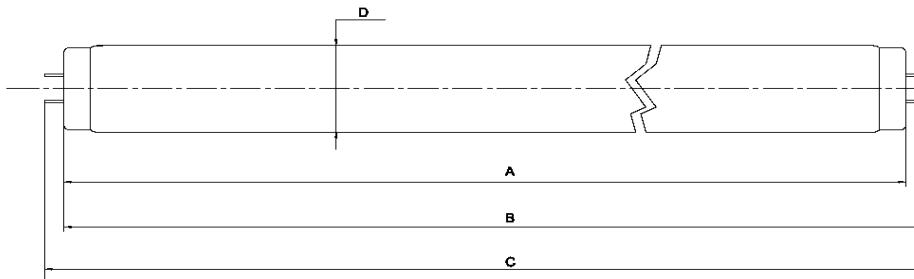


Tanning Lamp - Data Sheet

pureSunlight 1719 R 160 W

160-R-29/1,8

KBL part.-No. 3230076305 A
 Dimensions 1700 x 38 mm
 Base G13 Bi-Pin

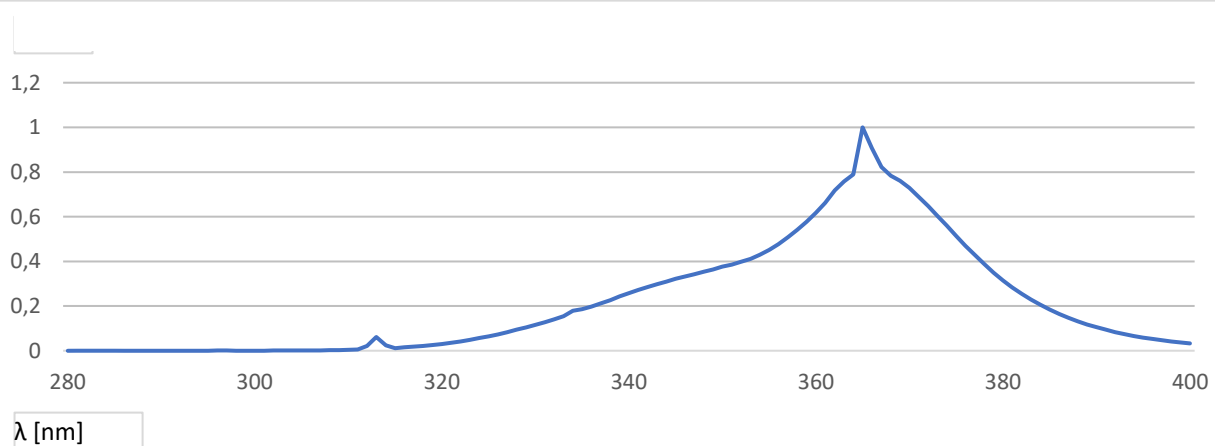


A_{max} 1701,2 mm
 B_{max} 1708,3 mm
 C_{max} 1715,4 mm
 D_{max} 40,4 mm

SM

LM

Relative Spectral Distribution



Electrical Data (nominal values)

Lamp Wattage	160 W	Lamp Voltage	96 V
Lamp Current	1,72 A	Ballast	160 W

Physical Data (nominal values)

UVA Radiation Flux	39 W	E _{er} (250-400 nm)	29,4 mW/m ²
UVB/UVA Ratio		E _{er} (320-400 nm)	16,4 mW/m ²
EUR (UVB 280-315)	0,5 %	E _{er} (250-320 nm)	13,0 mW/m ²
USA (UVB 260-320)	0,9 %	NMSC Ratio ($\leq 320 / > 320$ nm)	1,8
		Useful life (recommended)	800 h

Recommended Exposure Times

Start Time *	3,4 min	TE*	16,5 min
Max. Time for Skin Type II*	8,6 min	TM*	42,5 min
Max. Time for Skin Type III*	12,1 min		
Max. Time for Skin Type IV*	15,5 min		

*For a typical irradiance in a bed of 470 W/m²

These results will vary depending on the size and type of bed the lamp is installed