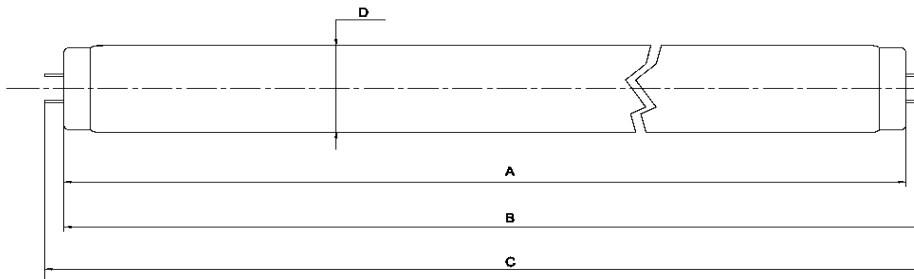


# Tanning Lamp - Data Sheet

**pureSunlight 1930 R 120W**

**120-R-24/2,2**

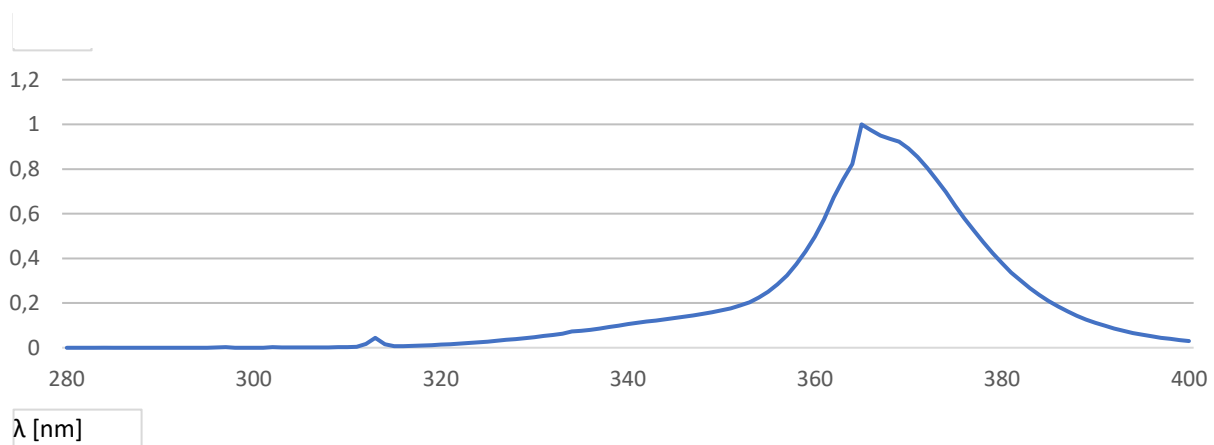
KBL part.-No. 3230076310  
 Dimensions 1900 x 38 mm  
 Base G13 Bi-Pin



$A_{max}$  1901,3 mm  
 $B_{max}$  1908,4 mm  
 $C_{max}$  1915,5 mm  
 $D_{max}$  40,4 mm

SM  LM

## Relative Spectral Distribution



## Electrical Data (nominal values)

Lamp Wattage	120 W	Lamp Voltage	124 V
Lamp Current	1,11 A	Ballast	120 W

## Physical Data (nominal values)

UVA Radiation Flux	36 W	E <sub>er</sub> (250-400 nm)	23,5 mW/m <sup>2</sup>
UVB/UVA Ratio		E <sub>er</sub> (320-400 nm)	10,3 mW/m <sup>2</sup>
EUR (UVB 280-315)	0,5 %	E <sub>er</sub> (250-320 nm)	13,2 mW/m <sup>2</sup>
USA (UVB 260-320)	0,7 %	NMSC Ratio (≤320/>320nm)	2,2
		Useful life (recommended)	800 h

## Recommended Exposure Times

Start Time *	4,4 min	TE*	21,4 min
Max. Time for Skin Type II*	11,0 min	TM*	59,1 min
Max. Time for Skin Type III*	15,4 min		
Max. Time for Skin Type IV*	19,9 min		

\*For a typical irradiance in a bed of 360 W/m<sup>2</sup>

These results will vary depending on the size and type of bed the lamp is installed