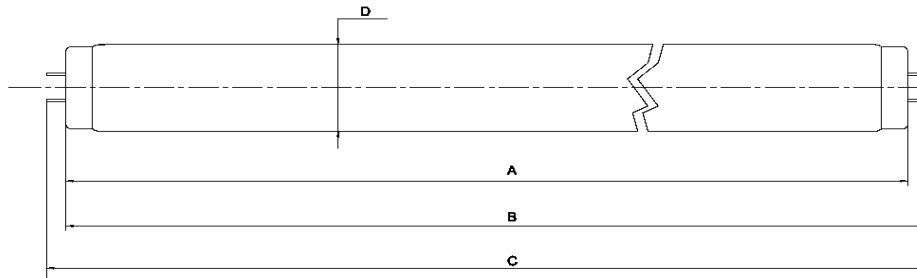


# Tanning Lamp - Data Sheet

**pureSunlight 1938 R 180W**

**180-N-31/2,9**

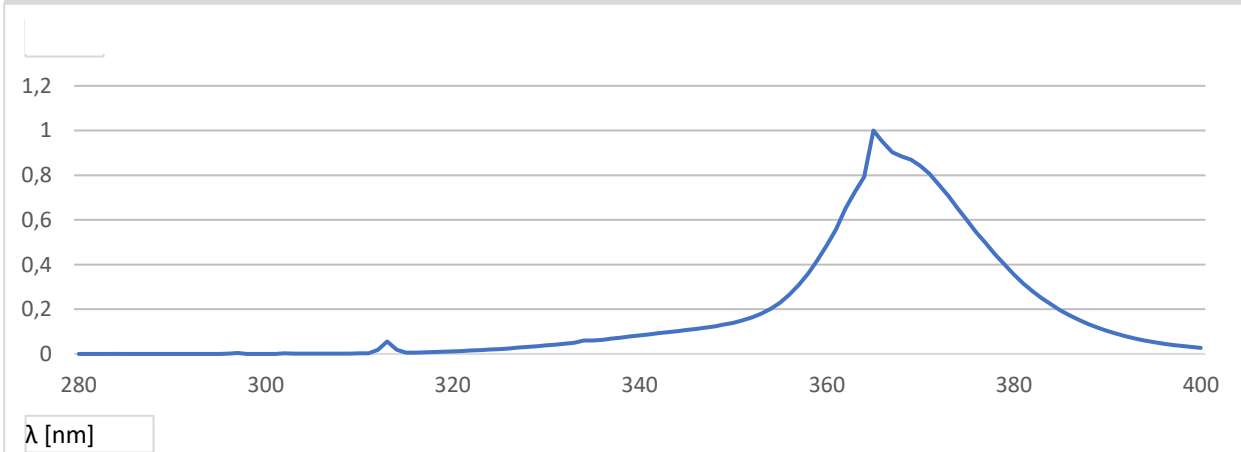
KBL part.-No. 3230076331  
 Dimensions 1900 x 38 mm  
 Base G13 Bi-Pin



$A_{max}$  1901,3 mm  
 $B_{max}$  1908,4 mm  
 $C_{max}$  1915,5 mm  
 $D_{max}$  40,4 mm

SM  LM

## Relative Spectral Distribution



## Electrical Data (nominal values)

Lamp Wattage	180 W	Lamp Voltage	100 V
Lamp Current	1,96 A	Ballast	180 W

## Physical Data (nominal values)

UVA Radiation Flux	48 W	Eer (250-400 nm)	30,5 mW/m <sup>2</sup>
UVB/UVA Ratio		Eer (320-400 nm)	11,6 mW/m <sup>2</sup>
EUR (UVB 280-315)	0,6 %	Eer (250-320 nm)	18,9 mW/m <sup>2</sup>
USA (UVB 260-320)	0,8 %	NMSC Ratio ( $\leq 320 / > 320$ nm)	2,9
		Useful life (recommended)	800 h

## Recommended Exposure Times

Start Time *	4,0 min	TE*	19,5 min
Max. Time for Skin Type II*	10,0 min	TM*	55,2 min
Max. Time for Skin Type III*	13,9 min		
Max. Time for Skin Type IV*	17,9 min		

\*For a typical irradiance in a bed of 350 W/m<sup>2</sup>  
 These results will vary depending on the size and type of bed the lamp is installed