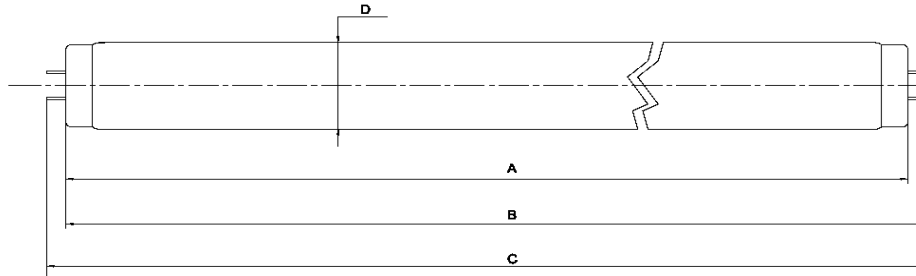


# Tanning Lamp - Data Sheet

**extraSunlight 0321 O 8W**

**8-O-68/99.6**

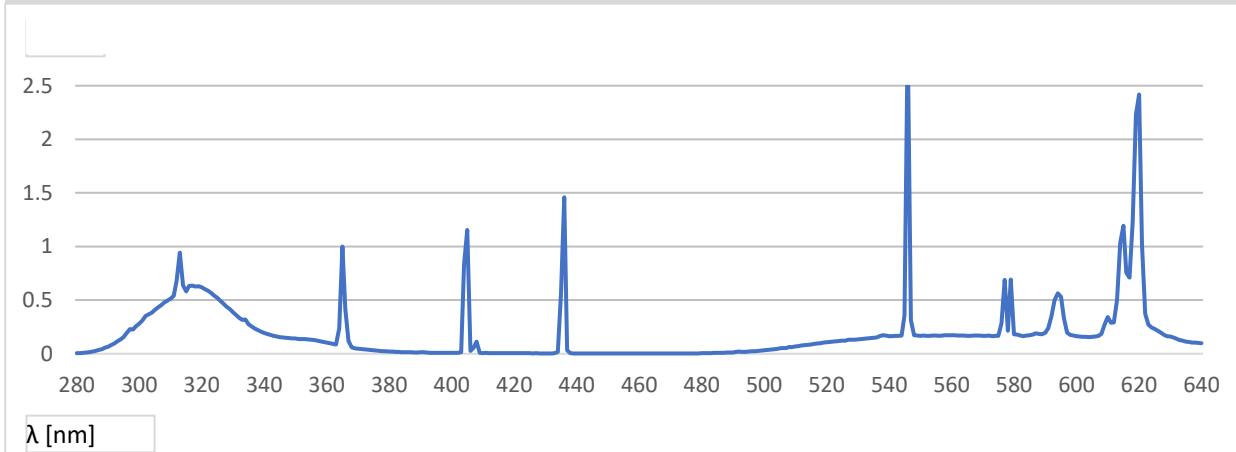
KBL part.-No. 3230076182  
 Dimensions 300 x 16mm  
 Base G5 Bi-Pin



$A_{\max}$  300,0  
 $B_{\max}$  307,1  
 $C_{\max}$  314,2  
 $D_{\max}$  16,0

SM  LM

## Relative Spectral Distribution



## Electrical Data (nominal values)

Lamp Wattage	8 W	Lamp Voltage	58 V
Lamp Current	0.17 A	Ballast	8 W

## Physical Data (nominal values)

UVA Radiation Flux	0 W	Eer (250-400 nm)	68.3 mW/m <sup>2</sup>
UVB/UVA Ratio		Eer (320-400 nm)	0.6 mW/m <sup>2</sup>
EUR (UVB 280-315)	55.7 %	Eer (250-320 nm)	67.7 mW/m <sup>2</sup>
USA (UVB 260-320)	91.5 %	NMSC Ratio (≤320/>320nm)	99.6
		Useful life (recommended)	500 h

## Recommended Exposure Times

Start Time *	0.9 min	TE*	3.4 min
Max. Time for Skin Type II*	2.3 min	TM*	10.6 min
Max. Time for Skin Type III*	3.2 min		
Max. Time for Skin Type IV*	4.1 min		

\*For a typical irradiance in a bed of 10 W/m<sup>2</sup>  
 These results will vary depending on the size and type of bed the lamp is installed