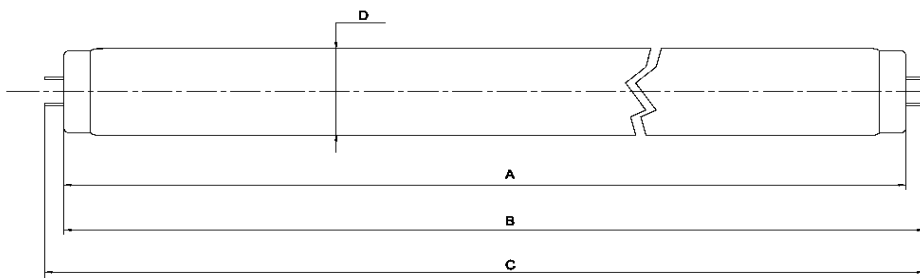


# Tanning Lamp - Data Sheet

**blueSunlight 1716 R 160W**

**160-R-30/2,4**

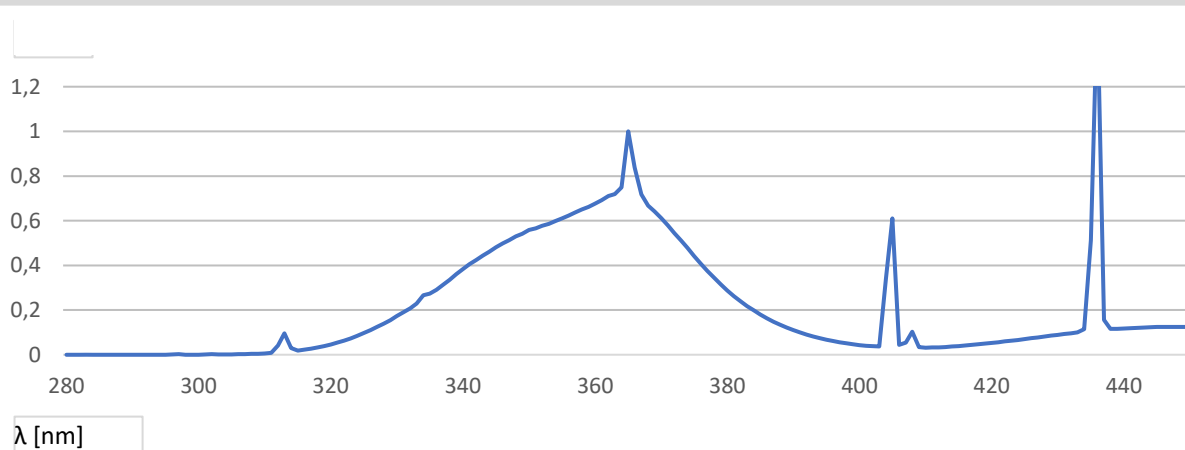
KBL part.-No. 3230076301  
 Dimensions 1700 x 38 mm  
 Base G13 Bi-Pin



$A_{max}$  1701,2 mm  
 $B_{max}$  1708,3 mm  
 $C_{max}$  1715,4 mm  
 $D_{max}$  40,4 mm

SM  LM

## Relative Spectral Distribution



## Electrical Data (nominal values)

Lamp Wattage	160 W	Lamp Voltage	99 V
Lamp Current	1,71 A	Ballast	160 W

## Physical Data (nominal values)

UVA Radiation Flux	31 W	E <sub>er</sub> (250-400 nm)	30,2 mW/m <sup>2</sup>
UVB/UVA Ratio		E <sub>er</sub> (320-400 nm)	14,8 mW/m <sup>2</sup>
EUR (UVB 280-315)	0,7 %	E <sub>er</sub> (250-320 nm)	15,3 mW/m <sup>2</sup>
USA (UVB 260-320)	1,3 %	NMSC Ratio (≤320/>320nm)	2,4
		Useful life (recommended)	800 h

## Recommended Exposure Times

Start Time *	3,4 min	TE*	16,2 min
Max. Time for Skin Type II*	8,6 min	TM*	42,5 min
Max. Time for Skin Type III*	12,1 min		
Max. Time for Skin Type IV*	15,5 min		

\*For a typical irradiance in a bed of 370 W/m<sup>2</sup>

These results will vary depending on the size and type of bed the lamp is installed